

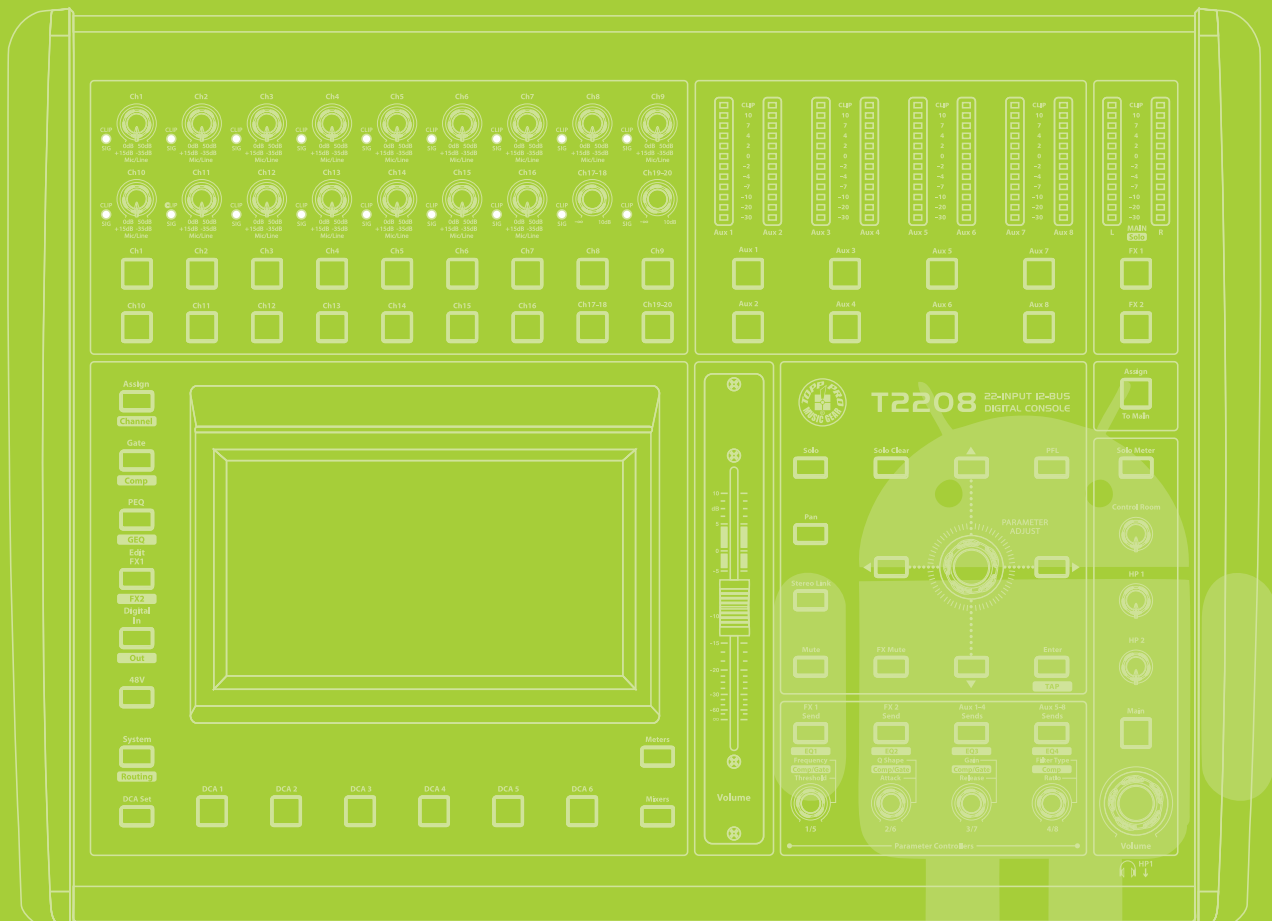


# T2208

## Android App

### Operating Instructions

android



# T2208 App Operating Instructions

## 1. Preparation for use



(1)



(2)



(3)

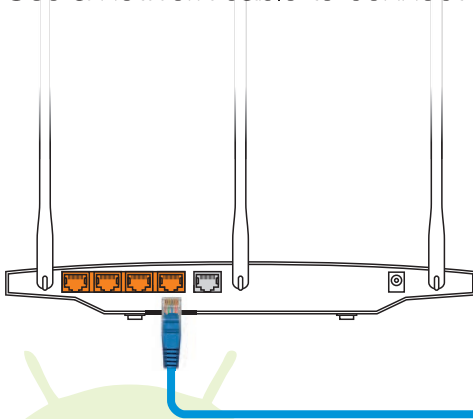


(4)

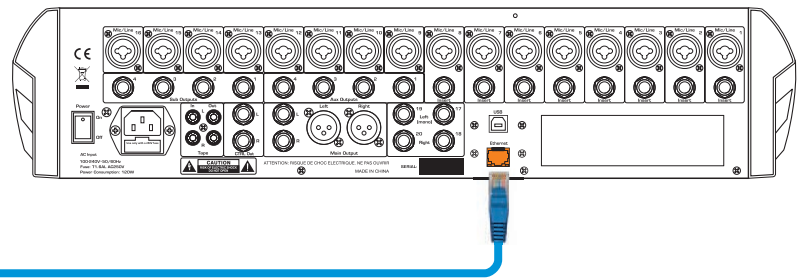
- (1) T2208 Device
- (2) Android Handheld devices (Tablet)
- (3) A wireless router
- (4) One network cable

## 2. Instructions

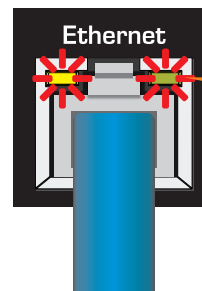
- (1) Use a network cable to connect the T2208 to a wireless router



Connect the wireless router's LAN port with a network cable



Use the other end of the same network cable to connect to the T2208 Ethernet port

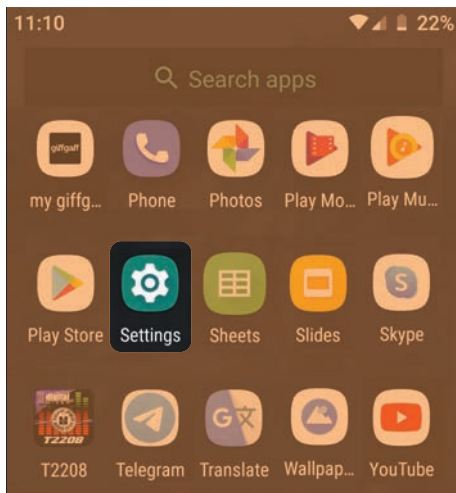


Make sure the network cable connection signal is always on.

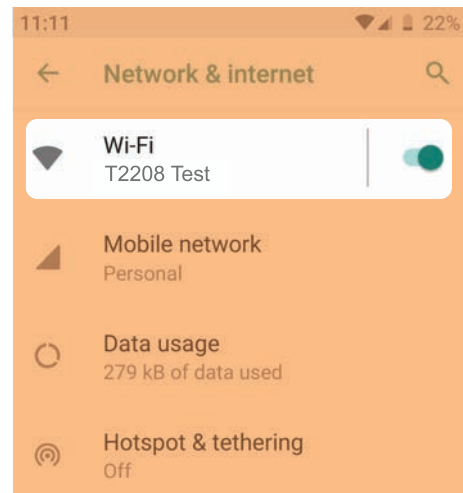
# T2208 App Operating Instructions

## 2. Instructions (cont.)

(2) Open your tablet and open the settings function, then connect to the wireless router you just set up.

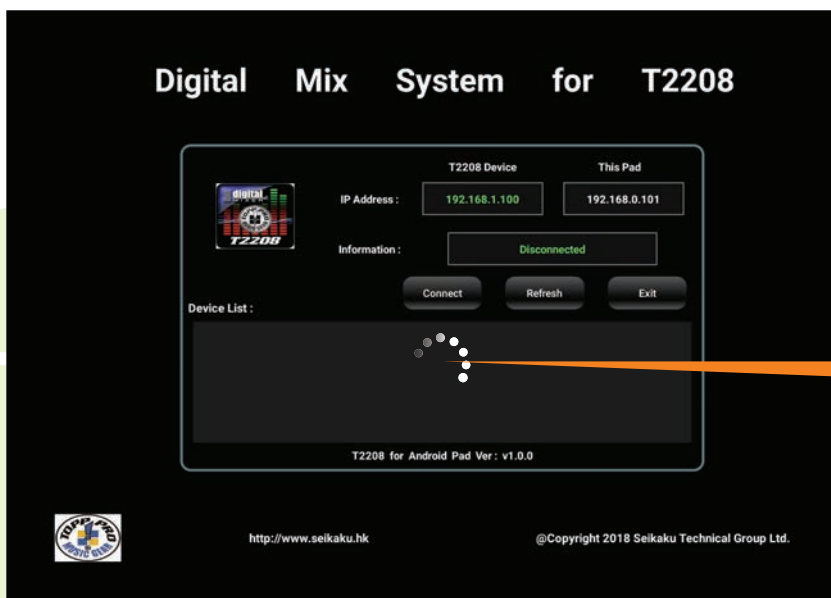


Open Tablet's Settings

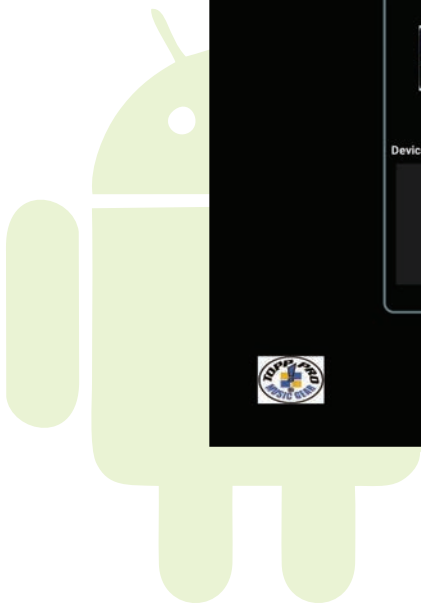


Connect it to the corresponding router

(3) Open the T2208 App, then search out the device and connect to it.

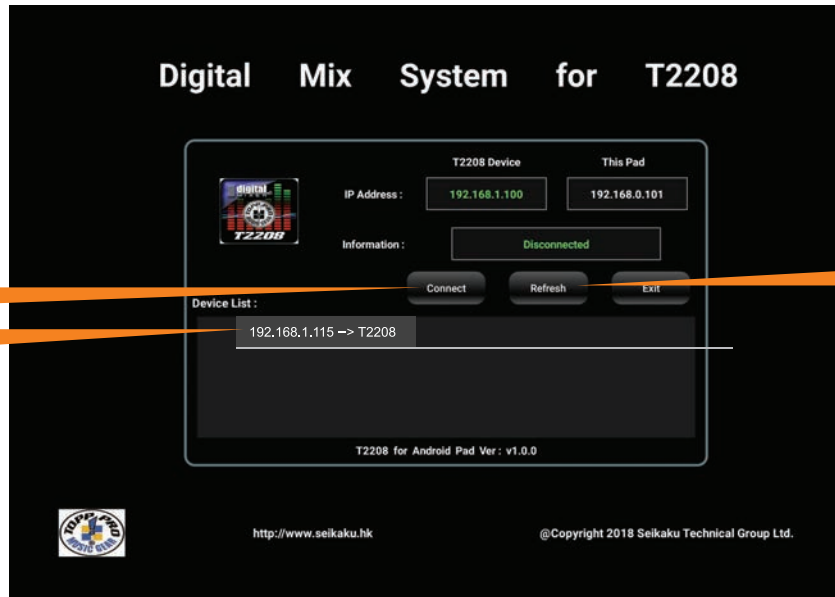


Searching devices now



# T2208 App Operating Instructions

## 2. Instructions (cont.)



Find the T2208 and select it, then click the Connect button

If you can't find the mixer, please Refresh again

If the LED connection light is green, it proves that the APP and the device are connected. If it is gray, it means disconnected.



### Attention:

When the device is not found, you can try to restart the APP or T2208 hardware device. And check whether the peripheral devices such as the network cable and router are normal.

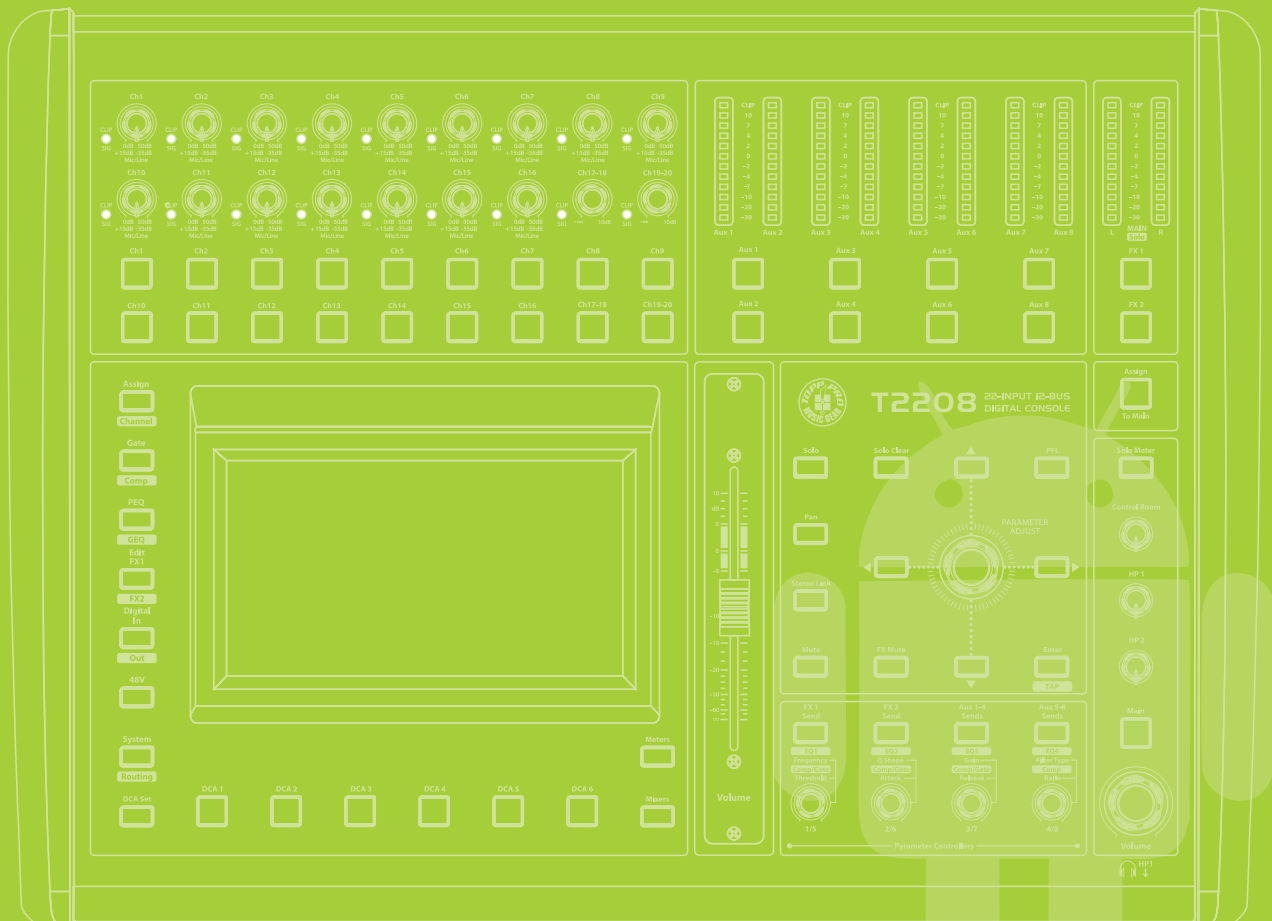


# T2208

## Android App

### Instrucciones de Operación

android



# T2208 App, Instrucciones de Operación

## 1. Preparación antes de Usar



(1)



(2)



(3)

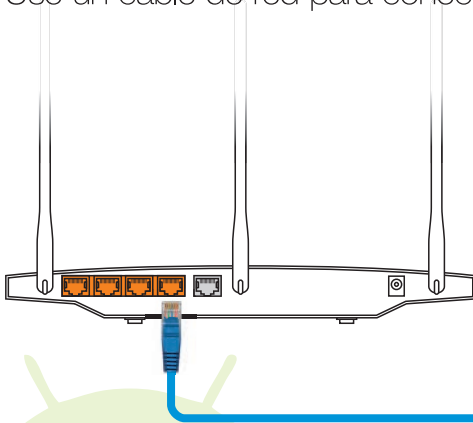


(4)

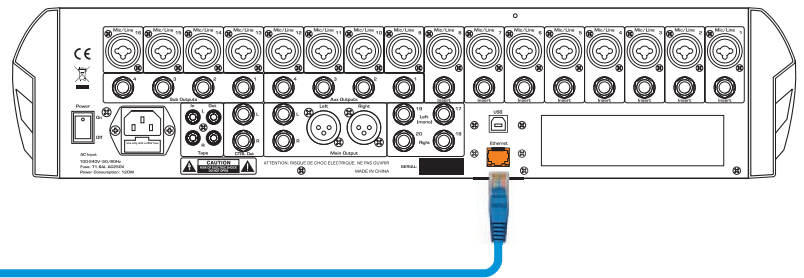
- (1) Mezclador T2208
- (2) Dispositivo Android (Tableta)
- (3) Un Router Inalámbrico
- (4) Un cable de Red

## 2. Instrucciones

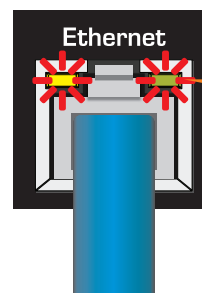
- (1) Use un cable de red para conectar su T2208 con un router inalámbrico



Conecte a el cable de red a un puerto del router inalámbrico



Use el otro extremo del mismo cable para conectarlo al puerto Ethernet de su T2208

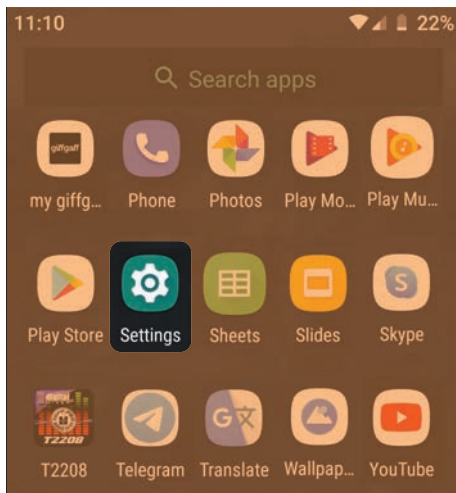


Asegúrese que la señal de conexión del cable este siempre encendida.

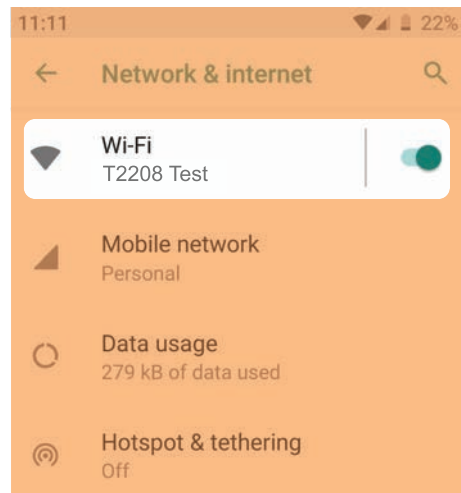
# T2208 App, Instrucciones de Operación

## 2. Instrucciones (cont.)

(2) En su tableta vaya a la sección Ajustes y una vez allí vaya a Redes. Conecte su dispositivo a la red del router inalámbrico que acaba de preparar.

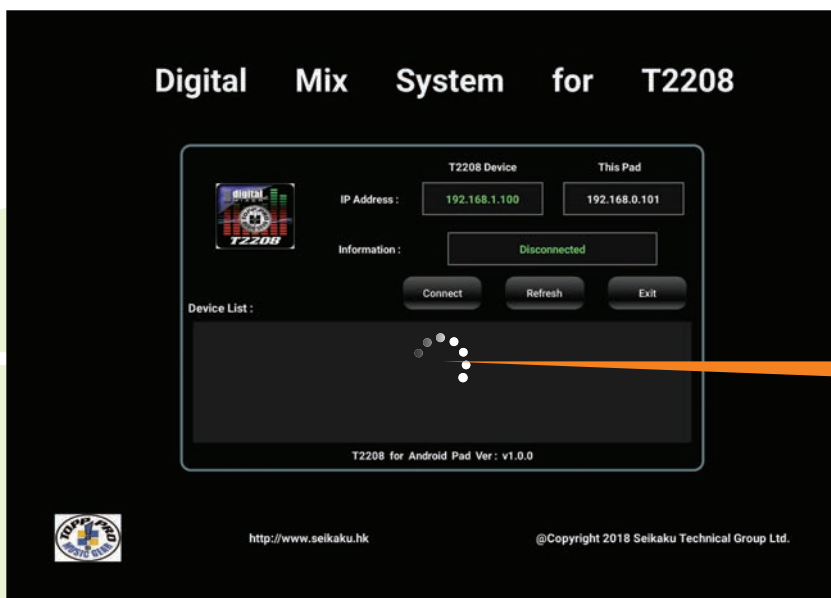


Abra la sección Ajustes de su tableta



Conecte su dispositivo a la red del router correspondiente

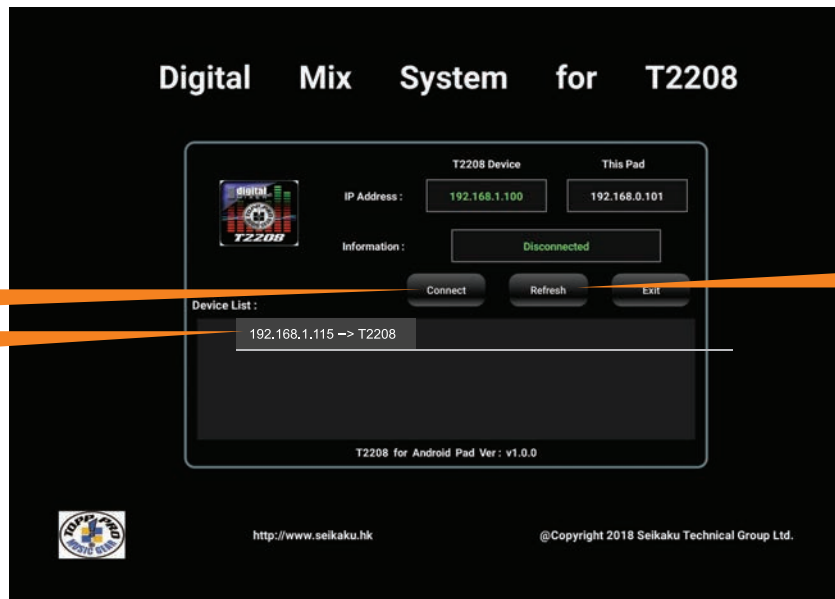
(3) Abra la App en su tableta, busque su T2208 y conéctese al mismo.



Buscando dispositivos

# T2208 App, Instrucciones de Operación

## 2. Instrucciones (cont.)



Busque su T2208 selecciónela y haga click en el botón Conectar

Si no encuentra su T2208 reinicie la búsqueda nuevamente

Si el LED de conexión está de color verde, significa que la APP y el dispositivo están conectados. Si el color es gris, significa que están desconectados.



### Atención:

Si no encuentra el dispositivo pruebe reiniciar la APP y/o su mezclador T2208. También asegúrese de revisar que el cable y el router están en condiciones normales.